

FIS1 Antibody (N-term)
Purified Rabbit Polyclonal Antibody (Pab)
Catalog # AP20678a**Specification**

FIS1 Antibody (N-term) - Product Information

Application	WB,E
Primary Accession	O9Y3D6
Reactivity	Human, Mouse, Rat
Host	Rabbit
Clonality	Polyclonal
Isotype	Rabbit IgG
Calculated MW	16938

FIS1 Antibody (N-term) - Additional Information**Gene ID** 51024**Other Names**

Mitochondrial fission 1 protein, FIS1 homolog, hFis1, Tetratricopeptide repeat protein 11, TPR repeat protein 11, FIS1, TTC11

Target/Specificity

This FIS1 antibody is generated from a rabbit immunized with a KLH conjugated synthetic peptide between 6-40 amino acids from the N-terminal region of human FIS1.

Dilution

WB~~1:1000

E~~Use at an assay dependent concentration.

Format

Purified polyclonal antibody supplied in PBS with 0.09% (W/V) sodium azide. This antibody is purified through a protein A column, followed by peptide affinity purification.

Storage

Maintain refrigerated at 2-8°C for up to 2 weeks. For long term storage store at -20°C in small aliquots to prevent freeze-thaw cycles.

Precautions

FIS1 Antibody (N-term) is for research use only and not for use in diagnostic or therapeutic procedures.

FIS1 Antibody (N-term) - Protein Information**Name** FIS1**Synonyms** TTC11

Function Involved in the fragmentation of the mitochondrial network and its perinuclear clustering (PubMed:[12783892](#), PubMed:[12861026](#), PubMed:[14996942](#), PubMed:[23283981](#)). Plays a minor role in the recruitment and association of the fission mediator dynamin-related protein 1 (DNM1L) to the mitochondrial surface and mitochondrial fission (PubMed:[12861026](#), PubMed:[16118244](#), PubMed:[23283981](#), PubMed:[23530241](#), PubMed:[24196833](#)). May not be essential for the assembly of functional fission complexes and the subsequent membrane scission event (PubMed:[23530241](#), PubMed:[24196833](#)). Also mediates peroxisomal fission (PubMed:[16107562](#)). May act when the products of fission are directed toward mitochondrial homeostasis, mitophagy, or apoptosis (PubMed:[24196833](#)). Can induce cytochrome c release from the mitochondrion to the cytosol, ultimately leading to apoptosis (PubMed:[12783892](#)).

Cellular Location

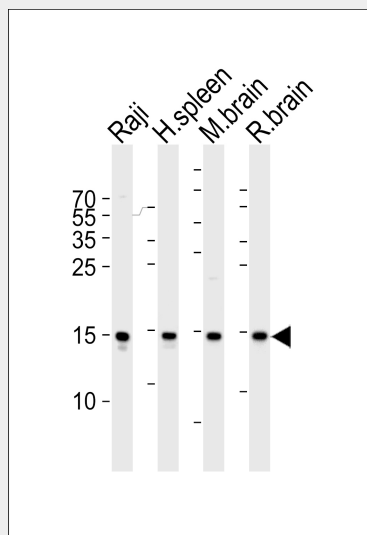
Mitochondrion outer membrane; Single-pass membrane protein. Peroxisome membrane; Single-pass membrane protein

FIS1 Antibody (N-term) - Protocols

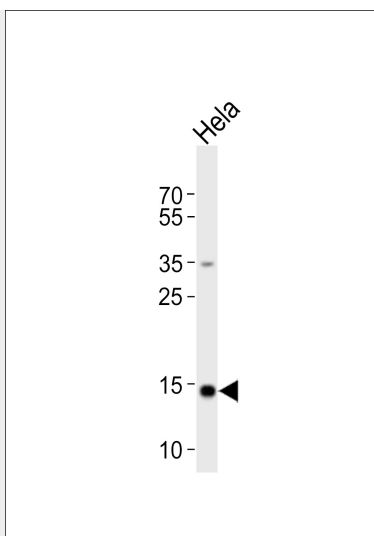
Provided below are standard protocols that you may find useful for product applications.

- [Western Blot](#)
- [Blocking Peptides](#)
- [Dot Blot](#)
- [Immunohistochemistry](#)
- [Immunofluorescence](#)
- [Immunoprecipitation](#)
- [Flow Cytometry](#)
- [Cell Culture](#)

FIS1 Antibody (N-term) - Images



Western blot analysis of lysates from Raji cell line, human spleen, mouse brain and rat brain tissue lysate(from left to right), using FIS1 Antibody (N-term)(Cat. #AP20678a). AP20678a was diluted at 1:1000 at each lane. A goat anti-rabbit IgG H&L(HRP) at 1:5000 dilution was used as the secondary antibody. Lysates at 35ug per lane.



Western blot analysis of lysate from HeLa cell line, using FIS1 Antibody (N-term)(Cat. #AP20678a). AP20678a was diluted at 1:1000. A goat anti-rabbit IgG H&L(HRP) at 1:10000 dilution was used as the secondary antibody. Lysate at 20ug.

FIS1 Antibody (N-term) - Background

Involved in the fragmentation of the mitochondrial network and its perinuclear clustering. Plays a minor role in the recruitment and association of the fission mediator dynamin- related protein 1 (DNM1L) to the mitochondrial surface and mitochondrial fission. Can induce cytochrome c release from the mitochondrion to the cytosol, ultimately leading to apoptosis. Also mediates peroxisomal fission.

FIS1 Antibody (N-term) - References

Lai C.-H.,et al.Genome Res. 10:703-713(2000).
Hillier L.W.,et al.Nature 424:157-164(2003).
Bienvenut W.V.,et al.Submitted (JUN-2005) to UniProtKB.
James D.I.,et al.J. Biol. Chem. 278:36373-36379(2003).
Yoon Y.,et al.Mol. Cell. Biol. 23:5409-5420(2003).